



1D Marketfield Court Marketfield Way

Redhill RH1 1EU

£1,700 Per Calendar Month

Presenting this modern, luxury two-bedroom apartment situated on the ground floor at the front of the block. The property features an open-plan living area with light oak-effect laminate flooring. The kitchen is fitted with white high-gloss base and wall units, along with integrated appliances including an oven, vitroceramic hob, fridge/freezer and washer/dryer. The hallway includes a convenient storage cupboard, while both double bedrooms offer built-in wardrobes and fitted carpets. Completing the property is a three-piece luxury 'Roca' bathroom suite with a monsoon shower over the bath. The block also benefits from a smart lift and a video entry system with mobile app control, allowing you to receive intercom calls wherever you are.

Marketfield Court modern development offers a collection of high-specification one and two-bedroom apartments, many with private balconies. Ideally situated in the heart of Redhill town centre, you'll be just a short walk from Redhill Station — perfect for commuting to London. The Light Cinema and entertainment, shops, cafés, gyms and restaurants are all right on your doorstep.

From the welcoming foyer to the smart lift and luxurious finishes, these are among the finest rental apartments available in Redhill today.

At PURE RESi, our homes are thoughtfully designed and built exclusively for renters, offering a living experience tailored to your needs.

As our tenant, you'll enjoy the peace of mind that comes with renting from a professional and reliable landlord. We offer longer-term tenancies, dedicated in-house management and maintenance teams, and a convenient Tenant App that gives you access to important documents, maintenance requests, and feedback tools — all designed to make your renting experience as smooth and stress-free as possible.

- Luxury Modern Apartment
- Full Fibre Available - Up To 1600Mbps
- Modern Fitted Kitchen
- No Parking
- Built Exclusively For Renters
- Wi-Fi Controlled Washer/ Drier
- Video Entry With Mobile App Control
- Excellent Transport Links
- Ground Floor
- Council Tax Band D

Viewing

Please contact Pure Resi on 01306 888000 to arrange a viewing appointment for this property or if you require any further information.

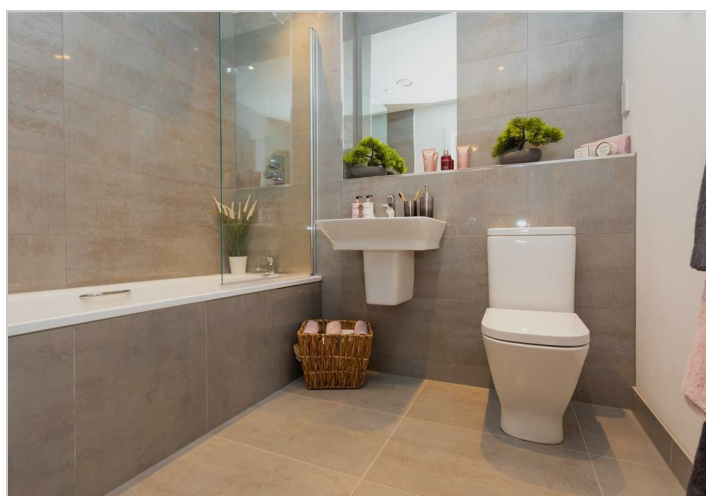
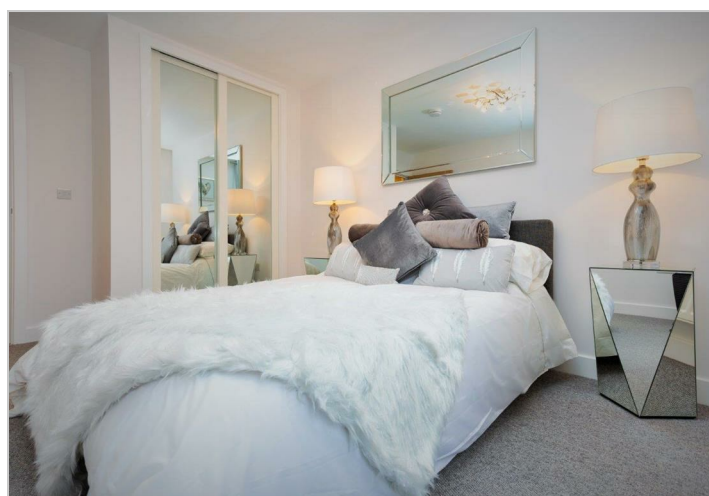
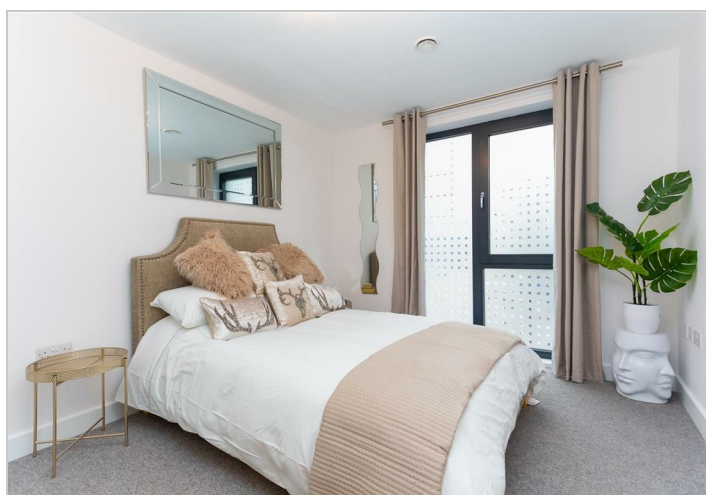
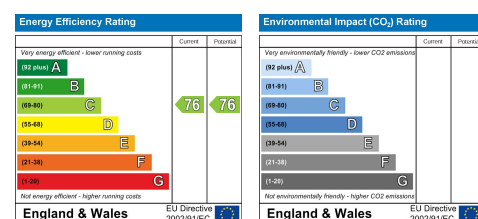


Floor Plan

Area Map



Energy Efficiency Graph



These particulars, whilst believed to be accurate are set out as a general outline only for guidance and do not constitute any part of an offer or contract. Intending purchasers should not rely on them as statements of representation of fact, but must satisfy themselves by inspection or otherwise as to their accuracy. No person in this firm's employment has the authority to make or give any representation or warranty in respect of the property.

The Old Courthouse, 267-273, High Street, Dorking, Surrey, RH4 1RY
Tel: 01306 888000 Email: info@pure-resi.co.uk www.pure-resi.co.uk